



NORTHAMPTON
GATEWAY
STRATEGIC RAIL FREIGHT INTERCHANGE

HYDE FARM HOUSE – MINOR SCHEME AMENDMENT

DOCUMENT 8.14

The Northampton Gateway Rail Freight Interchange Order 201X

HYDE FARM HOUSE – MINOR SCHEME AMENDMENT | 8 JANUARY 2019

www.northampton-gateway.co.uk

THE NORTHAMPTON GATEWAY RAIL FREIGHT INTERCHANGE ORDER 201X

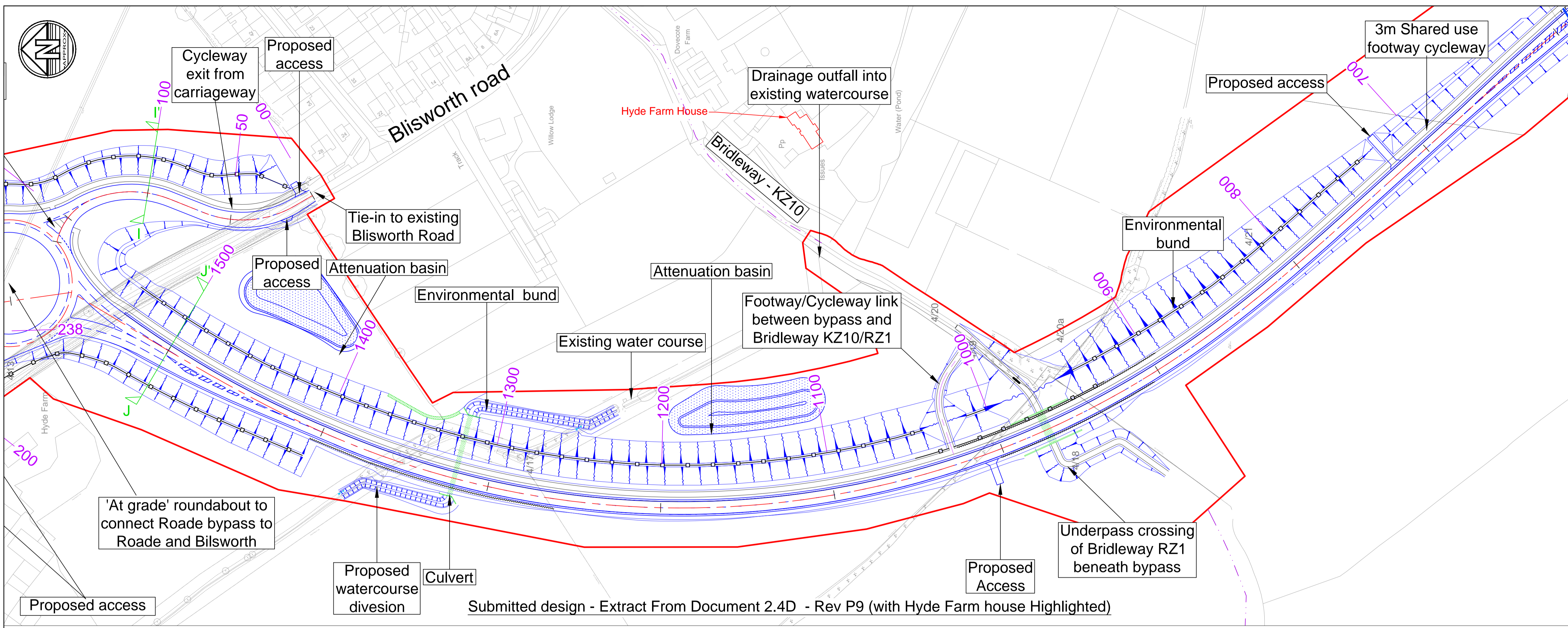
DOCUMENT 8.14 – HYDE FARM HOUSE – MINOR SCHEME AMENDMENT

Explanation of minor change requested

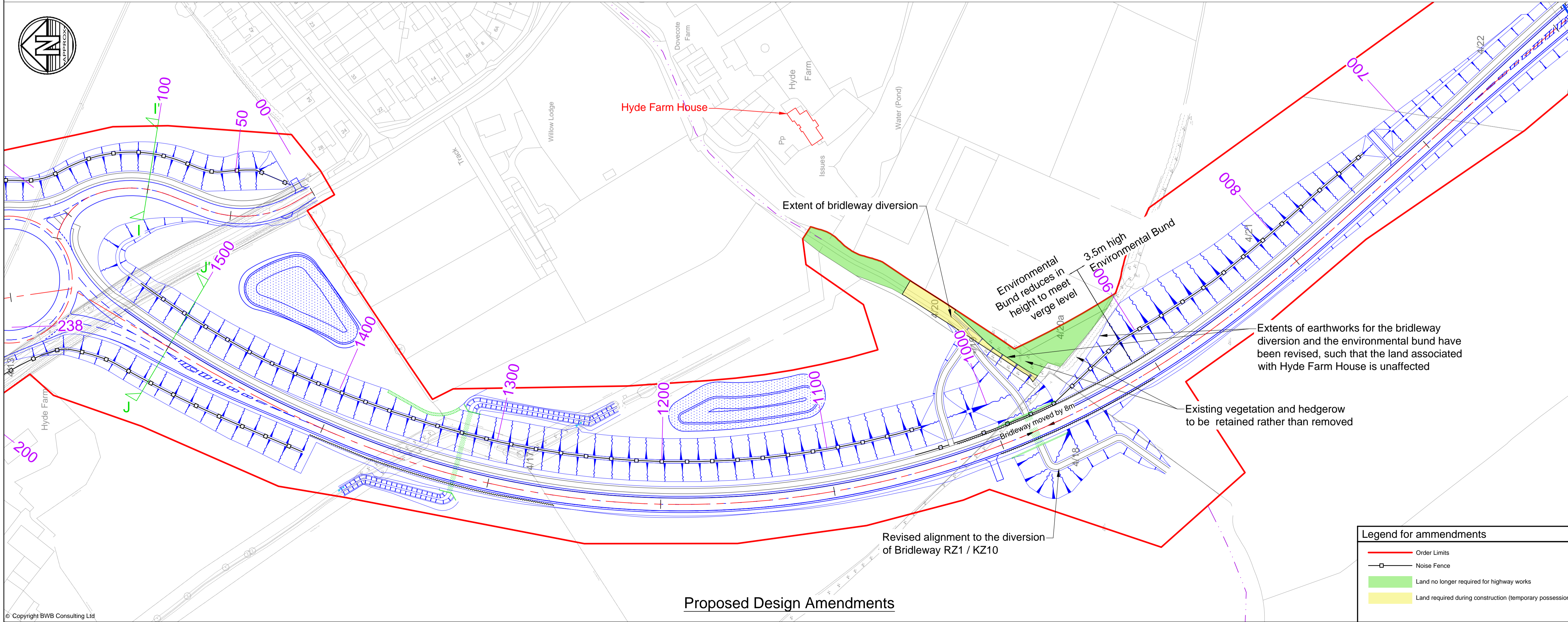
1. In response to discussions with the affected landowner (the owner of Hyde Farm House and related land) the Applicant is proposing a minor amendment to the design of the Roade bypass at the point where it passes closest to Hyde Farm House.
2. The Applicant proposes to relocate the bridleway (KZ10/RZ1) underpass some 8m to the north of its submitted location, and make a minor adjustment to the design of the screening bund adjacent to the bypass. These changes will allow the existing vegetation screening to be retained along the boundary of the land owned by the owners of Hyde Farm House.
3. The changes are shown on the attached drawing (ref NGW-BWB-GEN-XX-SK-C-SK85-S3-P7), which also shows the submitted design for ease of comparison reference. No changes to the geometric design of the bypass itself are proposed.
4. In addition, the Applicant has reviewed the environmental impact of the changes and considers that there will be no adverse impacts arising from the proposed change. The impact of the proposed development on Hyde Farm House will be reduced, resulting in a minor benefit over the original proposal, however this is unlikely to materially reduce the impact on Hyde Farm below the minor adverse significance identified in the environmental statement.
5. Accordingly the objective of the proposed change is to address concerns raised by the landowner rather than to address any environmental impacts.

Documentation Changes

6. The change would require consequential amendments to some of the application documentation and accordingly the Applicant proposes to submit updated versions of the following drawings and documents to reflect this proposed change by **Deadline 5**:
 - a. Land Plans Sheet 4 of 6 (**Document 2.1D**, AS-019)
 - b. Book of Reference (**Document 4.3**, APP-075)
 - c. Access and Rights of Way Plans Sheet 3 of 5 (**Document 2.3C**, AS-015)
 - d. Highway Plans GA Sheet 4 of 6 (**Document 2.4D**, APP-030)
 - e. Highway Plans Long Section Sheet 4 of 6 (**Document 2.4P**, APP-040)
 - f. Highway Classification Plans Sheet 3 of 4 (**Document 2.5C**, APP-049)
 - g. Speed limit plans Sheet 3 of 4 (**Document 2.7C**, APP-058)
 - h. Minor changes to relevant dDCO Schedules to reflect the changes to the above documentation



Submitted design - Extract From Document 2.4D - Rev P9 (with Hyde Farm house Highlighted)



Proposed Design Amendments

Legend for amendments

- Order Limits
- Noise Fence
- Land no longer required for highway works
- Land required during construction (temporary possession)

Notes

- Do not scale this drawing. All dimensions must be checked/ verified on site. If in doubt ask.
- This drawing is to be read in conjunction with all relevant architects, engineers and specialists drawings and specifications.
- All dimensions in millimetres unless noted otherwise. All levels in metres unless noted otherwise.
- Any discrepancies noted on site are to be reported to the engineer immediately.

Key Plan

P7	07.01.19	Legend updated	PG	SRH
P6	07.01.19	Drawing layout updated	PG	SRH
P5	07.01.19	Annotations updated	PG	SRH
P4	04.01.19	Drawing layout updated	PG	SRH
P3	04.01.19	Minor updates	SRH	SRH
P2	03.12.18	Extents of noise fence amended	PG	SRH
P1	19.11.18	Preliminary Issue	PG	SRH
Rev	Date	Details of issue / revision	Drw	Rev

Issues & Revisions

BWB
CONSULTANCY | ENVIRONMENT
INFRASTRUCTURE | BUILDINGS

- Birmingham | 0121 233 3322
- Leeds | 0113 233 8000
- London | 020 7407 3879
- Manchester | 0161 233 4260
- Nottingham | 0115 924 1100

www.bwbconsulting.com

Client

ROXHILL

Project Title

**NORTHAMPTON
GATEWAY RAIL FREIGHT
INTERCHANGE**

Drawing Title

**REVISIONS TO DESIGN AT
HYDE FARM HOUSE**

Drawn:	P. Goodyear	Reviewed:	S. Hilditch
BWB Ref:	NTH 2315	Date:	19.11.18
Drawing Status	Scale@A1: 1:1250		
FOR COMMENT			
Project - Originator - Zone - Level - Type - Role - Number	Status	Rev	
NGW-BWB-GWN-XX-SK-C-SK85	S3	P7	